

PAVEMENT MANAGEMENT



INTENSIVE SHORT COURSES

OCTOBER 29 - NOVEMBER 2, 2001 in URBANA, IL
DECEMBER 10 - 14, 2001 in FT. LAUDERDALE, FL



Office of Continuing Education

UNIVERSITY OF ILLINOIS AT URBANA-CHAMPAIGN
TOLL FREE 877-455-2687
www.conted.uiuc.edu

PAVEMENT MANAGEMENT

INTENSIVE SHORT COURSES

These courses are for you if you are responsible for managing airport, road, or parking lot pavement.

Level 1 is for those who want to learn how to:

- Define a pavement network
- Perform a Pavement Condition Index (PCI) inspection
- Create pavement inventory
- Analyze pavement condition
- Earn Continuing Education Units

Hands-on training using **Micro PAVER for Windows**

Level 2 is for those who want to learn how to:

- Develop and use pavement condition prediction models
- Analyze the consequence of different budget scenarios on future pavement condition and differed M&R
- View pavement data using GIS
- Earn Continuing Education Units

Hands-on training using **Micro PAVER for Windows**

Sponsors:

- University of Illinois at Urbana-Champaign
- Department of Civil and Environmental Engineering
- Office of Continuing Education

About the Workshops

The objectives of the Level 1 workshop are:

- Become familiar with the fundamentals of pavement management.
- Learn how to define pavement networks and divide airports, streets, and parking lots into management units/sections.
- Identify pavement distress types and severity levels.
- Perform a Pavement Condition Index (PCI) inspection.
- Develop pavement inventory and condition analysis reports.
- Get hands-on experience in workshops using Micro PAVER for Windows.

The objectives of the Level 2 workshop are:

- Review of pavement condition survey and assessment methods. This includes the Pavement Condition Index (PCI), roughness, nondestructive testing, and skid.
- Develop pavement condition prediction models and learn how to use them for pavement condition analysis and work planning.
- Perform Pavement Condition Analysis.
- Review Pavement M&R preventative techniques.
- Develop network level work plans and analyze the consequence of different budget scenarios on future pavement condition and differed M&R.
- Use GIS to view pavement inventory, condition.
- Get hands-on experience and workshops using Micro PAVER for Windows.

The Micro PAVER System

Micro PAVER is a pavement management system beneficial for use by military installations, municipalities, airports, counties, and any other organization responsible for managing a pavement network. It allows organizations easy access to pavement inventory and inspection information, provides accurate analysis of current and future conditions, provides for graphical presentations of reports through link with GIS software, and allows for optimization of pavement M&R even with budget restraints. Funding for Micro PAVER is provided by the U.S. Army, Air Force, Navy, Federal Aviation Administration (FAA), and the Federal Highway Administration (FHWA). The American Public Works Association and the University of Illinois have contributed significantly to the further development of Micro PAVER through monitoring field testing at many locations and providing feedback to the development team.

Micro PAVER is used nationally and internationally by cities, counties, airport authorities, planning commissions, and universities.

Who Should Attend

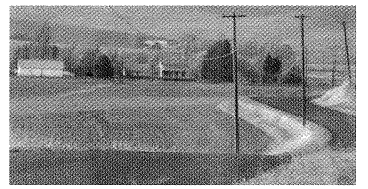
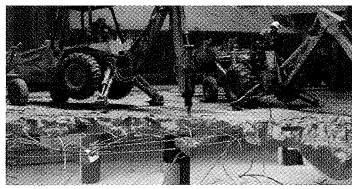
If you are a municipal, county, airport, military, or state engineer, a manager, planner, or are involved in pavement management, inspection, maintenance, rehabilitation, prioritization, or budget planning, then this Pavement Management Course can show you the most effective ways to utilize your pavement life and your pavement budget. Participants do not need a background in computers or the application of computers for pavement management. Level 1 is recommended for participants without prior experience in pavement network definition and PCI. Level 2 is recommended for those with network definition and PCI experience or those who participated in earlier workshops and wish to receive an update of the new pavement management capabilities.

Pavement Management Level 1 Outline:

- Introduction to pavement management
- Pavement Network Identification
- Pavement Distresses
- Pavement Condition Index (PCI)
- Field PCI Demonstration
- Development of Pavement Inventory
- Pavement Condition Analysis
- Hands-on Workshops Using Micro PAVER

Pavement Management Level 2 Outline:

- Brief review of pavement condition survey and assessment; Pavement Condition Index (PCI), International Roughness Index (IRI), use of automated pavement distress and nondestructive deflection testing use the Falling Weight deflectometer (FWD) and skid measurement.
- Development of pavement condition prediction modeling and use of the models for performing pavement condition analysis and work planning.
- Brief review of pavement preventative M&R techniques, including crack and joint sealing and surface treatments.
- Development of network level M&R work plans for different budget scenarios and analyzing the consequence of different budgets on future pavement condition and differed M&R needs.
- Use of GIS for presenting the results of pavement inventory, condition analysis, and work planning.



Reference Materials

Participants will receive current reports and manuals on the Micro PAVER System. The reference materials will serve the dual purpose of providing a textbook for the course as well as a valuable resource/reference tool for your future use.

Continuing Education Units & Certificates

Each participant in the comprehensive course will receive a certificate of participation and 1.2 CEUs (Level 1) and/or 1.8 CEUs (Level 2) from the University of Illinois at Urbana-Champaign for completion of the course. CEUs are nationally recognized units of achievement which can be used as evidence of increased performance capabilities and for job advancement.

Micro PAVER Technical Assistance Center

The Micro PAVER Technical Assistance Center is designed to distribute the Micro PAVER software and software updates and provide subscribers with technical support on a yearly basis. A Micro PAVER subscription provides you with Micro PAVER software and user manual, an experienced technician to answer your questions, our quarterly newsletter, communication with other users via our Internet list-serve, and many World Wide Web Services. A subscription to the Technical Assistance Center is \$650 for the first year and \$600 for each additional year and a \$35 shipping charge for international orders.

You may wish to take advantage of the reduced initial subscription fee to the Micro PAVER Technical Assistance Center (\$600 instead of \$650), which is made available as a part of your short course registration. To subscribe to Micro PAVER, see the Registration Form on the back cover of this brochure, or for more information on Micro PAVER subscriptions call 217-333-5414.

General Information

To Register: Pre-registration is required. See Registration options on the back cover of this brochure.

Course Date: The courses are being offered October 29 - November 2, 2001 in Urbana, IL and December 10 - 14, 2001 in Ft. Lauderdale, FL. The courses are divided into two levels: Level 1 - Introductory Information, for inexperienced Micro PAVER users and Level 2 - Advanced Applications, for experienced Micro PAVER users. You can register for either level of a course or both levels.

Location: The October course will be held at the Eastland Suites Hotel & Conference Center. A block of sleeping rooms will be held at the hotel at a rate of \$60/single occupancy, \$70/double occupancy, plus tax. Call 800-253-8331 to make your room reservation.

The December course will be held at the Sheraton Yankee Trader Beach Hotel. A block of sleeping rooms will be held at the hotel at a rate of \$119/intracoastal/city view, \$129/partial ocean view, and \$139/full ocean view, plus tax. Rates are based upon single or double occupancy. Call 800/958-5551 to make your room reservation.

Schedule: The Level 1 courses begin with registration at 8:30 AM on Monday and the Level 2 courses begin with registration at 8:30 AM on Wednesday. Each day of the courses is a full day concluding at 5 PM, except Friday of the Level 2 course, which ends at noon.

Fees: The registration fee for the Level 1 course is \$799 per person and for Level 2 the registration fee is \$999 per person, or you can register for both levels at \$1599 per person. Fees include the costs of all reference materials, computer time (1 computer/person), continental breakfast, and breaks. The individual participant is responsible for travel, meals, and lodging expenses.

Tax Deduction for Expenses: An income tax deduction may be allowed for education expenses undertaken to maintain or improve professional skills. This includes travel, meals, and lodging (see Treas. Reg. 1.162-5; Coughlin vs. Commissioners 203 F 2d 307).

Mailing Lists: Since mailing lists cannot always be cross-checked, you may receive more than one brochure. If you do, please pass it along to an interested associate.

Cancellation Policy: If you register and find you cannot attend, please telephone our office (217/333-5414) prior to the start of the course. Or if you cannot attend, you may want to send a substitute in your place.

Course Instructors

This course will be taught by one or more of the following instructors:

M. Y. Shahin

Dr. Shahin is the principal investigator on the development of the Micro PAVER System with the U.S. Army Construction Engineering Research Laboratory (CERL). Dr. Shahin has been heading the development of pavement management systems since joining CERL in 1974. He received the CERL Researcher of the Year Award for the development of the Pavement Condition Index (PCI) and the U.S. Army Research and Development Achievement Award for the development of the Paver System. Dr. Shahin received the 1991 Federal Engineer of the Year Award for his efforts in developing Micro PAVER and initiating the development of similar systems for other infrastructure facilities.

Dr. Shahin is a registered professional engineer in the State of Illinois and is a member of several societies and scientific committees. He is nationally recognized as one of the leaders in the area of pavement management and has written many publications on the subject of pavement evaluation, maintenance, and management. As a consultant, Dr. Shahin has

assisted many airports and local and international agencies in evaluating their current maintenance practices and developing maintenance and rehabilitation recommendations.

Jeff Burkhalter

Jeff Burkhalter is a System Development Specialist with ACS Government Solutions Group, Inc. Working with the Army Corps of Engineers, he has been directly involved in the development of the Micro PAVER program for the last five years. He also manages the implementation of the program for Department of Defense installations.

In addition, he has been an instructor in nearly 20 short courses on pavement management both for the University of Illinois and the Army Corps of Engineers.



Office of Continuing Education

UNIVERSITY OF ILLINOIS AT URBANA-CHAMPAIGN
302 East John Street, Suite 202
Champaign, IL 61820

PRESORTED
FIRST CLASS
U.S. Postage
PAID
Permit No. 75
Champaign, IL
61820

PAVEMENT MANAGEMENT INTENSIVE SHORT COURSES

FEIN # 37-6000511 • USE THIS AS YOUR INVOICE

REGISTRATION FORM

Name _____

Company/Organization _____

Address _____ City _____

State _____ Zip Code _____ Country _____

Telephone _____ Fax _____ E-mail _____

Please select one or both sessions

October 29 - November 2, 2001 Course Registration: (UFAS Account # 1-3-64739-0660)

- Level 1: \$799 (U.S. Dollars), M-Tu
- Level 2: \$999 (U.S. Dollars), W-F
- Level 1 & Level 2: \$1599 (U.S. Dollars), M-F

December 10-14, 2001 Course Registration: (UFAS Account # 1-3-64740-0660)

- Level 1: \$799 (U.S. Dollars), M-Tu
- Level 2: \$999 (U.S. Dollars), W-F
- Level 1 & Level 2: \$1599 (U.S. Dollars), M-F

- Technical Assistance Center Subscription: \$600
(U.S. Dollars) - UFAS Account # 1-3-64736

_____ Total enclosed

Method of Payment

- Check or money order enclosed (U.S. Dollars)
- Please charge credit card:
 - Visa MasterCard
 - AmEx Discover

_____ Card #

_____ Exp. Date

_____ Signature of Cardholder

NOTE: For Overseas Orders, Please Add \$35.00 to Cover Additional Shipping/Handling Charges.



Four easy ways to register:

1. Register on-line at http://www.conted.uiuc.edu/support_center
2. Call toll free 877-455-2687 to register by phone
3. Fax registration form to 217-333-9561 (available 24-hours a day)
4. Mail registration form and payment to:

Cashiering Office
University of Illinois
162 Administration Bldg
506 S. Wright Street
Urbana, IL 61801
Attn: PAVER
Registration

You may subscribe to the Micro PAVER Technical Assistance Center for \$600 (normally \$650) if you are registering for a Short Course.
New subscriptions only.