



Using Instant Messaging to Provide an Intelligent Learning Environment

Chun-Hung Lu¹, Guey-Fa Chiou², Min-Yuh Day^{1,3},
Chorng-Shyong Ong³, Wen-Lian Hsu¹

¹ *Institute of Information Science, Academia Sinica, Taiwan*

² *Dept. of Information and Computer Education, National Taiwan Normal University, Taiwan*

³ *Dept. of Information Management, National Taiwan University, Taiwan*

{enrico,myday,hsu}@iis.sinica.edu.tw
gueyfa@ice.ntnu.edu.tw
ongcs@im.ntu.edu.tw

Outline

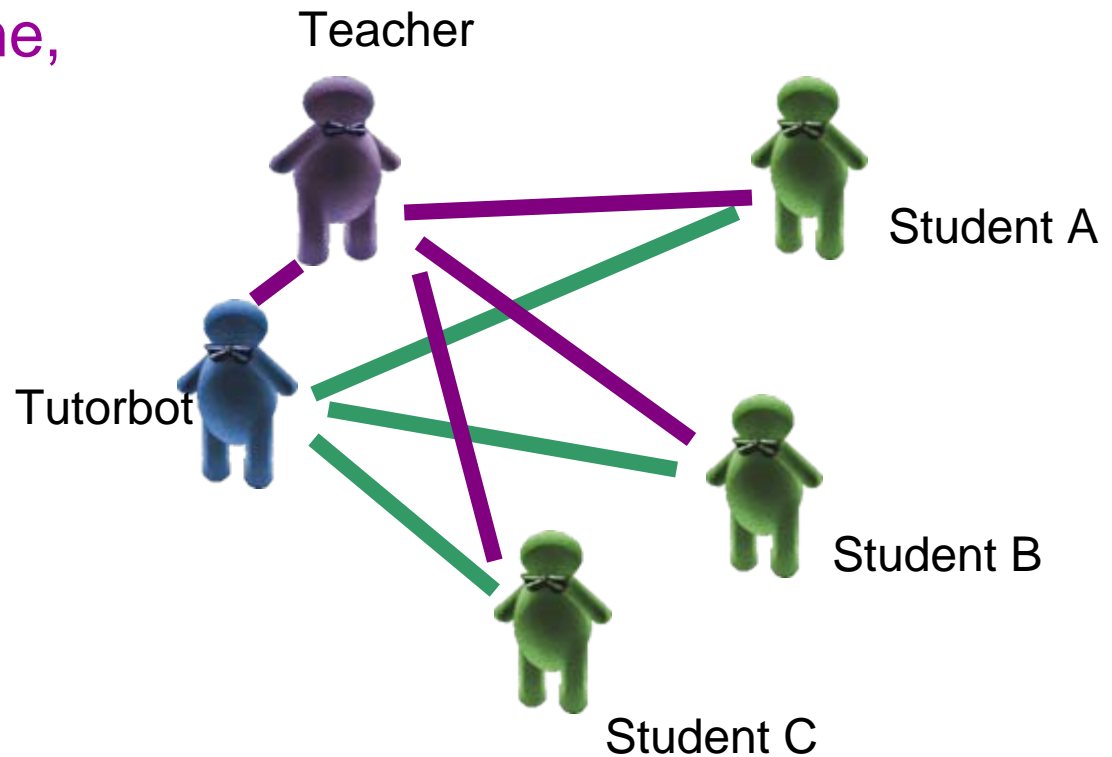
- Introduction
- Psychological Reasons
- System Architecture
 - RRMBot
 - ClassifyBot
 - AIMLBot
- User Case Scenario and Discussion
- Conclusion

Introduction

- Background
 - Instant Messaging
 - Enables learners and educators to interact in an online environment
 - Synchronous computer-mediated communication (CMC)
 - English as a Second Language (ESL)
- Purpose
 - TutorBot
 - Enhanced instant messaging-based Chatbot system
 - Provide students with on-line coaching in a total English learning environment by using AIML & Natural Language Processing technique.

TutorBot

Teacher cannot interact with students anytime, anywhere.



Tutorbot like a learning companion of students

Fig. 1. TutorBot provides synchronous communication between teacher and students.

TutorBot

- Chatbot
 - A program that emulates human conversation and enables natural language conversations with computers.
- TurtorBot
 - Ready reference material
 - Dictionaries
 - Authorized conversation material with speaking
 - Question Answering function
 - Record conversation for analysis

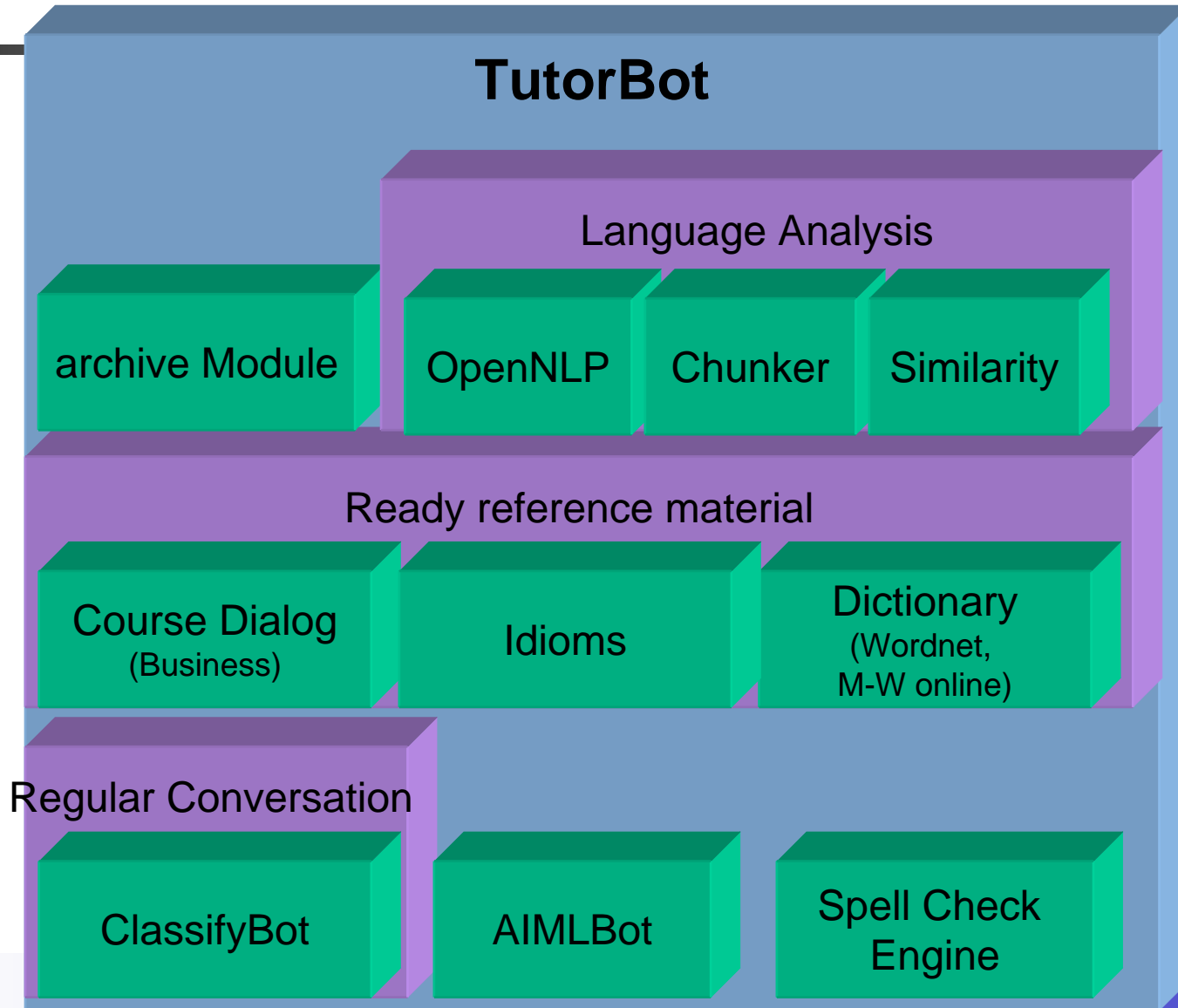
Psychological Reasons

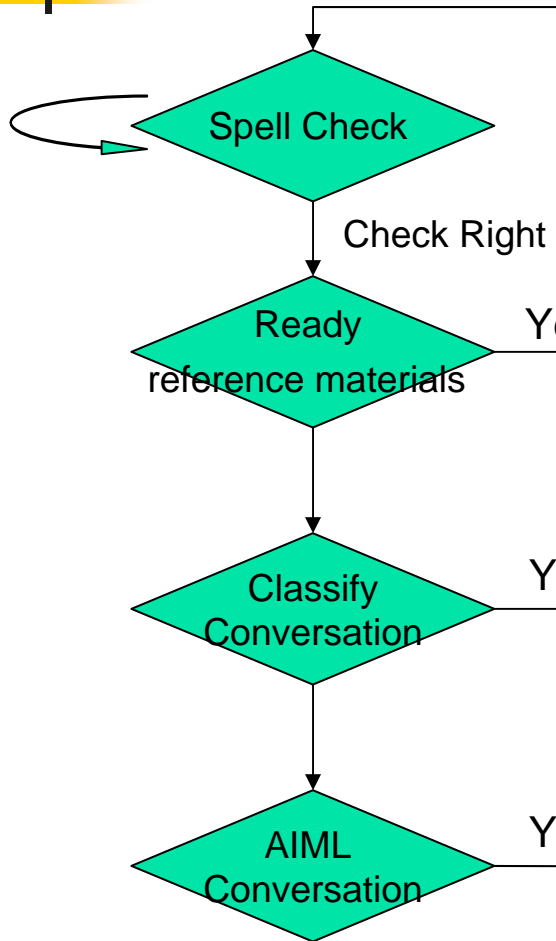
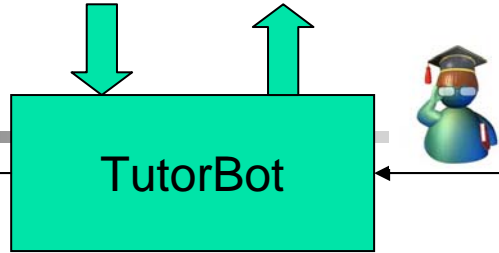
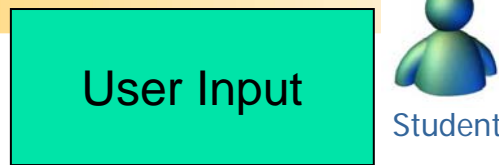
- People work harder to understand material when they feel they are in a conversation with **a partner**, rather than **simply receiving information**.
 - An agent with learning capacity can grow with the student.
- Pedagogical agents are **onscreen characters** that help guide the learning process during an e-learning episode.

Psychological Reasons (cont.)

- Skill development and expertise are strongly related to **the time and efficiency of deliberate practice**.
 - An “Instant Messaging” based agent can provide practice anytime, anywhere.
- On-line learning is a **collaborative endeavor** in which participants learn by collaboration.

System Architecture





Ready Reference Materials

Thanks to Overseas Radio & Television Inc.

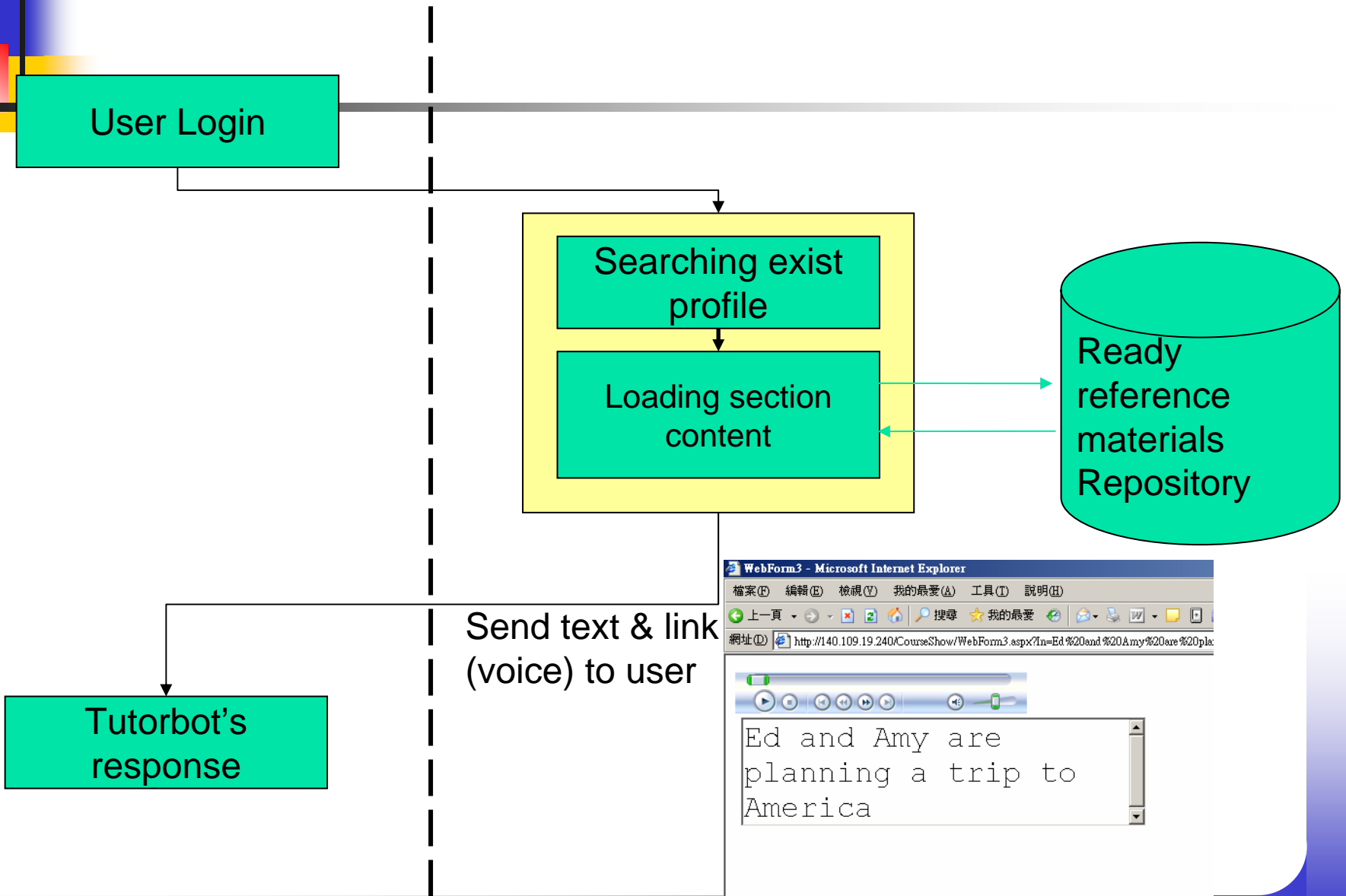
(<http://www.ortv.com.tw/>)

who provides us magazines

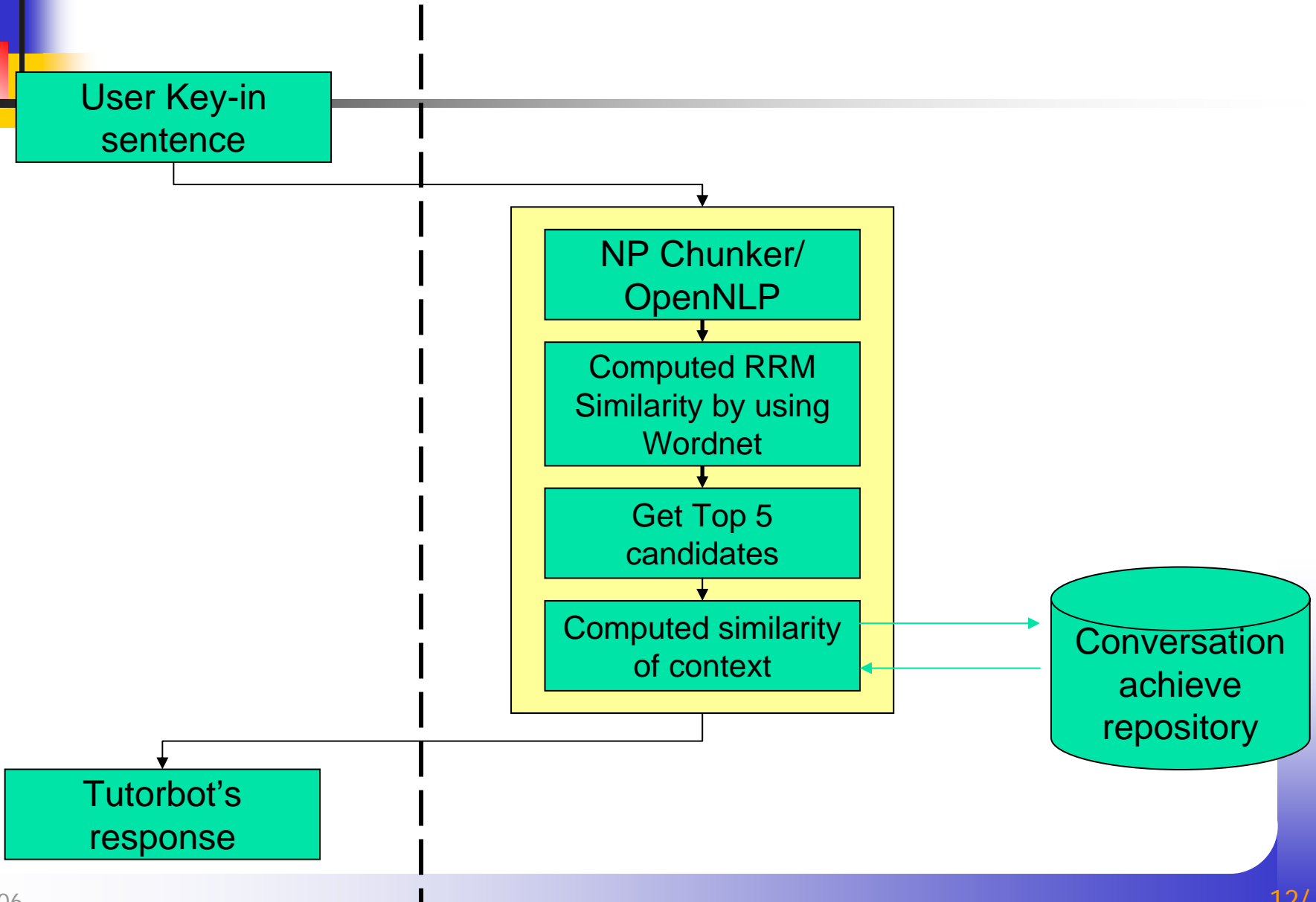
“Let’s Talk in English”, “Studio Classroom”, and “Advanced”



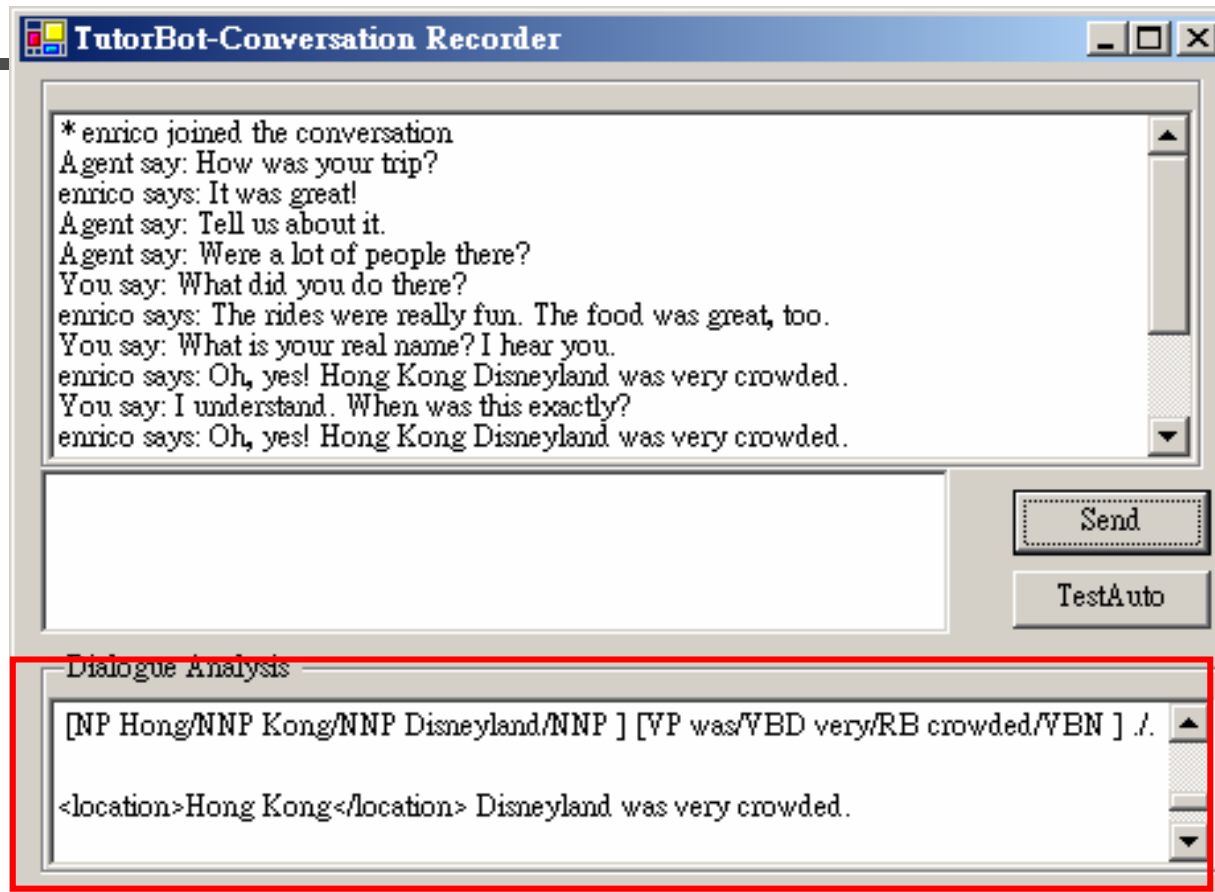
RRMBot



ClassifyBot



ClassifyBot



Backend which provides corpus-based concordance analysis and grammar analysis.

ClassifyBot

User Input

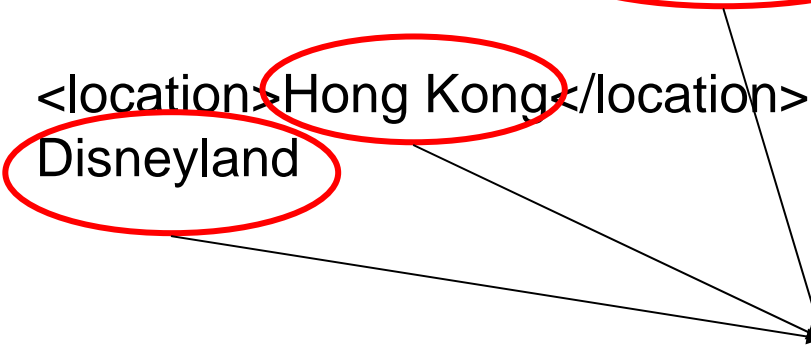
Oh, yes!
Hong Kong Disneyland was very crowded.

OpenNLP

chunk result: “[NP Hong/NNP Kong/NNP Disneyland/NNP]
[VP was/VBD very/RB crowded/VBN] ./.”

NER

<location>Hong Kong</location>
Disneyland



Using these information to find related topic

AIMLBot

- AIML
 - Artificial Intelligence Markup Language
- Why AIML?
 - Derivative of XML.
 - Adopted by the AI Foundation.
 - Does not incorporate dependencies upon any other language.
 - Small learning curve.
 - Simple yet extremely powerful for describing natural language conversation.

AIMLBot

- Using AIMLbot from

<http://www.ntoll.org/projects/aiml/>

- Adding 2 feature
 - Adding a spelling check engine
 - Making AIMLBot can process `` tag

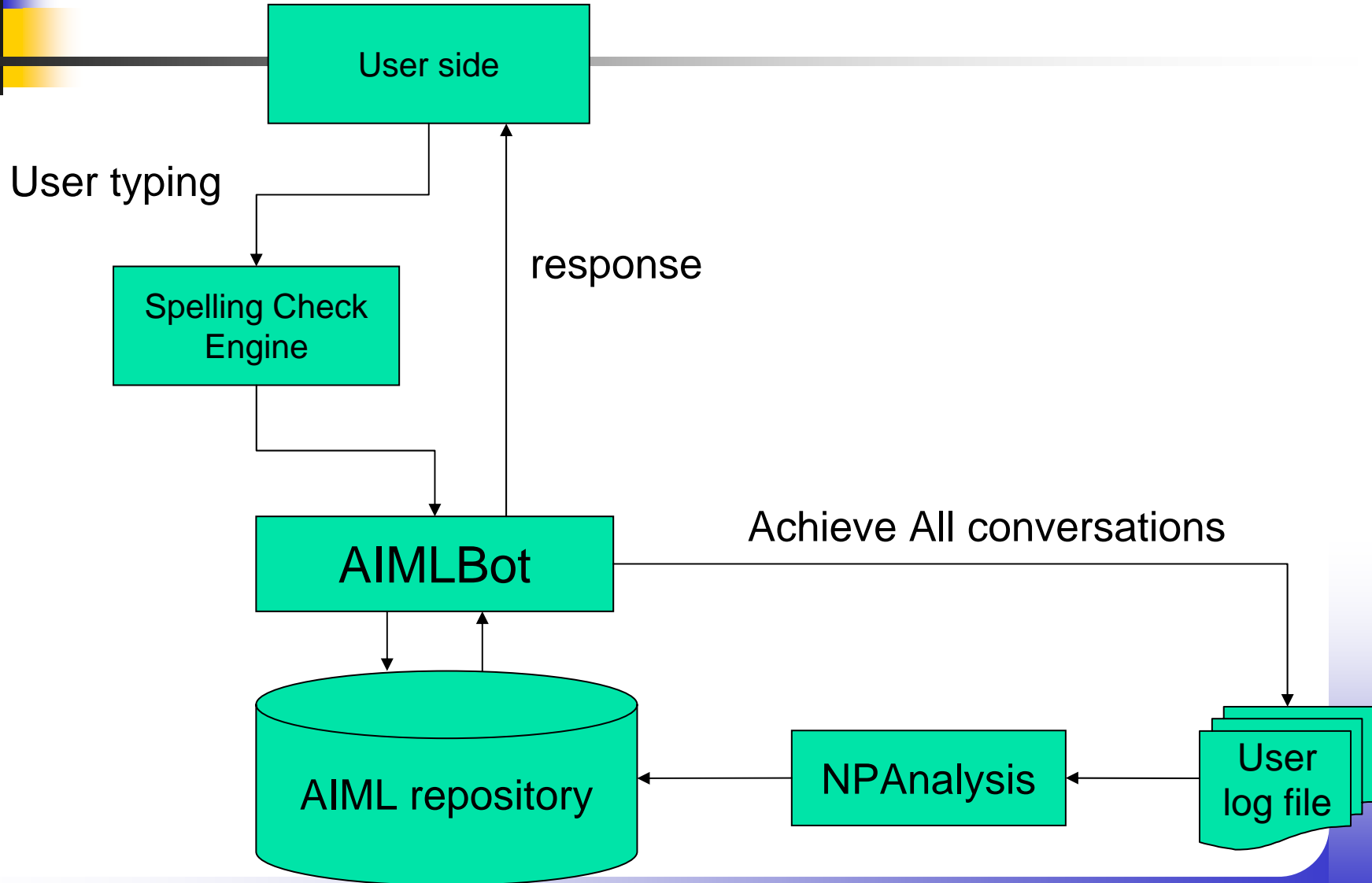
ALICE System

- ALICE
 - The Artificial Linguistic Internet Computer Entity
 - A software robot that you can chat with using natural language.
- ALICE is composed of two parts:
 - Chatbot Engine
 - The language model
- ALICE language model is stored in AIML files.

The AIML Format

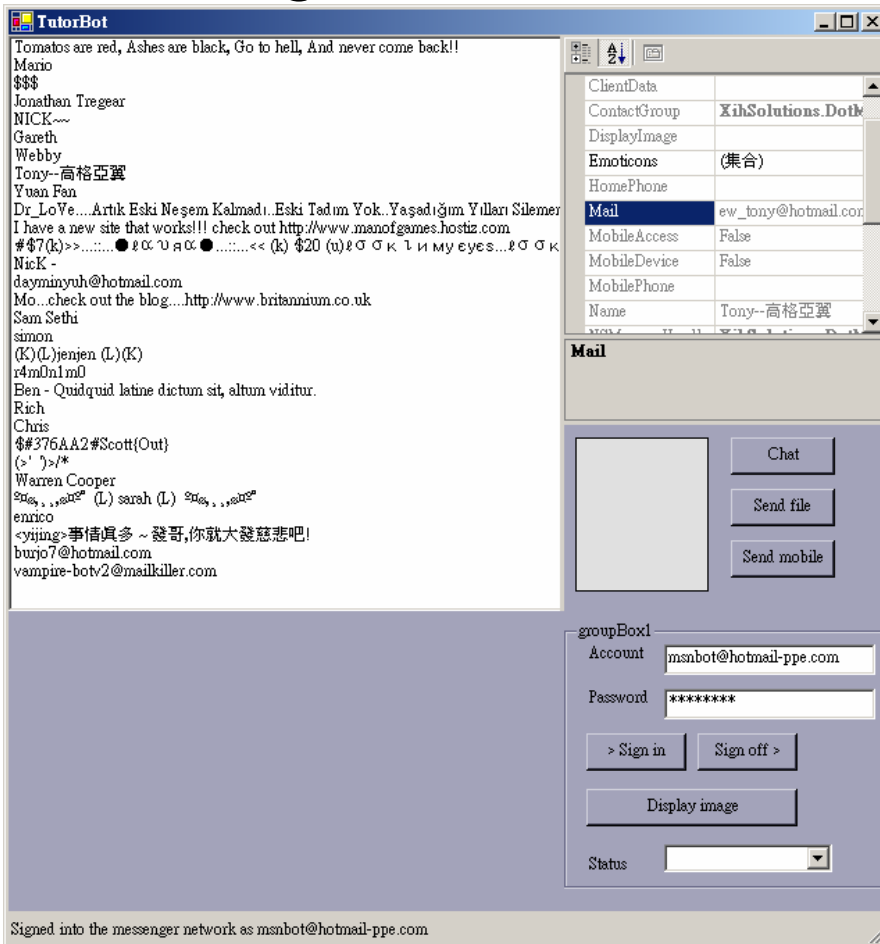
```
< aiml version="1.0" >  
< topic name="the topic" >  
  <category>  
    <pattern>Input</pattern>  
    <template>Output</template>  
  </category>  
  ..  
</topic>  
</aiml>
```

AIMLBot

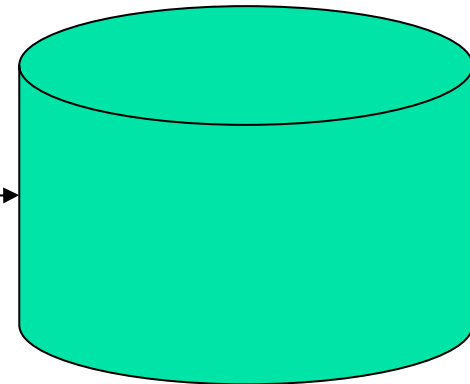


Backend of TutorBot

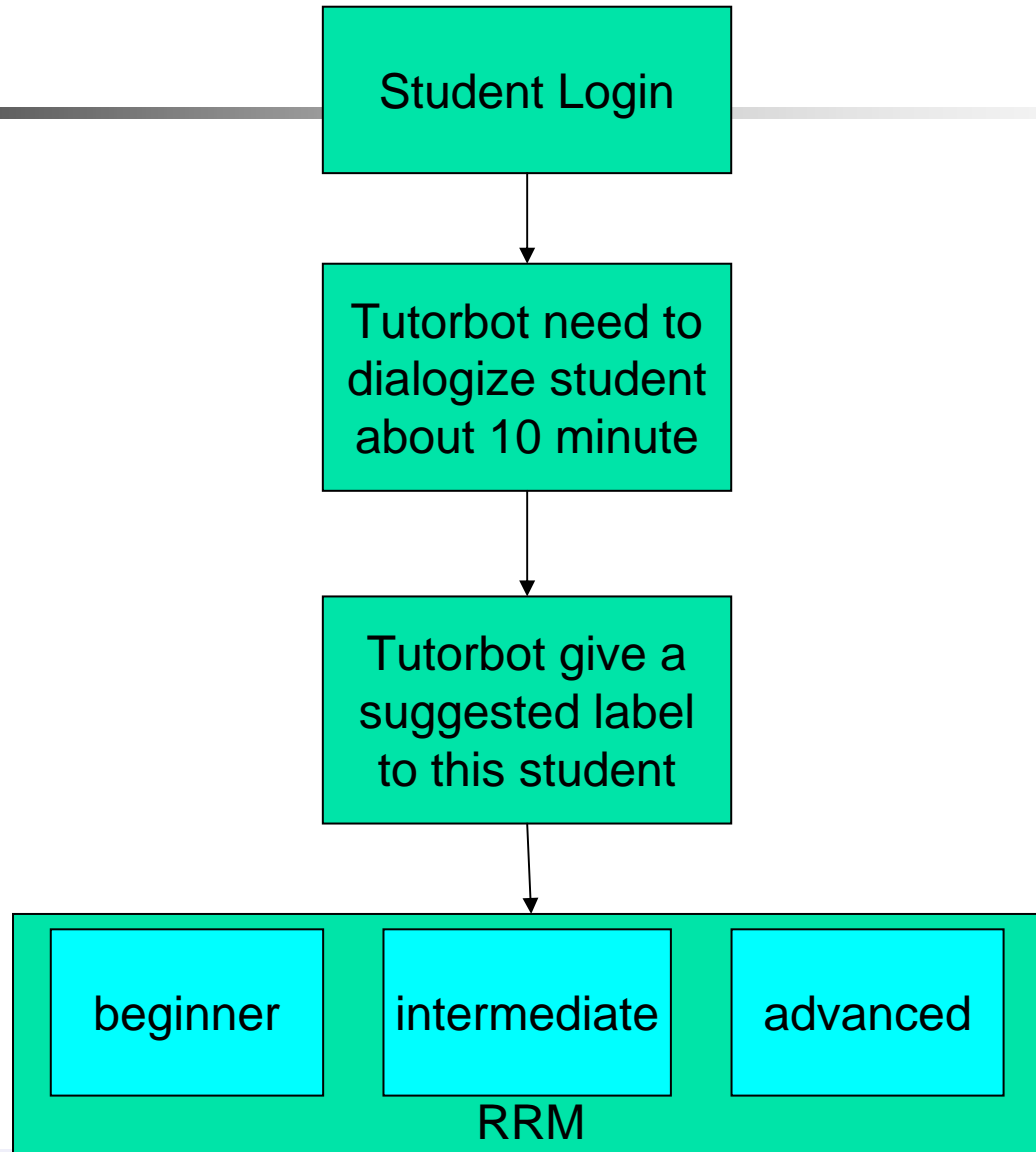
Login Screen



Backend Achieve System



User Case Scenario



Conclusions

- TutorBot plays the role of “assistant instructor” to provide service anytime, anywhere.
- Contribution
 - We use NLP tool and AIML to integrate several language learning components (words, sentences, sounds, and meanings) in context with an instant messaging-based Chatbot for English as a Second Language programs.



Q & A

Using Instant Messaging to Provide an Intelligent Learning Environment

Chun-Hung Lu¹, Guey-Fa Chiou², Min-Yuh Day^{1,3},
Chorng-Shyong Ong³, Wen-Lian Hsu¹

¹ *Institute of Information Science, Academia Sinica, Taiwan*

² *Dept. of Information and Computer Education, National Taiwan Normal University, Taiwan*

³ *Dept. of Information Management, National Taiwan University, Taiwan*

{enrico,myday,hsu}@iis.sinica.edu.tw
gueyfa@ice.ntnu.edu.tw
ongcs@im.ntu.edu.tw